



SIBIU – ROMANIA



SUPPLEMENTARY REGULATIONS

ASN Visa number: AI 010 / 21.05.2012

Licenta organizator FRAS: 21 din 04 iunie 2012

Permis organizator FRAS: 27 din 11 iunie 2012

| | |
|----------------------------------------------------|----|
| 1– INTRODUCTION | 3 |
| 2 – ORGANISATION | 4 |
| 3 – PROGRAMME | 8 |
| 4 – ENTRIES | 11 |
| 5 – INSURANCE..... | 16 |
| 6 – ADVERTISING AND IDENTIFICATION | 17 |
| 7 – TYRES | 19 |
| 8 – FUEL..... | 20 |
| 9 – RECONNAISSANCE | 21 |
| 10 – ADMINISTRATIVE CHECKS | 23 |
| 11 – SCRUTINEERING, SEALING AND MARKING..... | 24 |
| 12 – OTHER PROCEDURES..... | 25 |
| 13 – IDENTIFICATION OF OFFICIALS | 32 |
| 14 – PRIZES..... | 32 |
| 15 – FINAL CHECKS..... | 33 |
| APPENDIX 1 – ITINERARY – LEG 1 | 36 |
| APPENDIX 1 – ITINERARY – LEG 2 | 37 |
| APPENDIX 2 – RECONNAISSANCE SCHEDULE | 38 |
| APPENDIX 3 – COMPETITORS’ RELATIONS OFFICERS | 40 |
| APPENDIX 4 – COMPETITION NRS. & ADVERTISING..... | 41 |
| APPENDIX 5 – Overalls, Helmets | 42 |
| Extracts from FIA Appendix L..... | 42 |
| APPENDIX 6 – IRC COMPULSORY ADVERTISING | 43 |
| APPENDIX 7 – SHAKEDOWN DISCLAIMER..... | 44 |
| APPENDIX 8..... | 45 |
| EMPTYING THE TANK AND/OR REFILLING | 45 |
| IN THE SERVICE PARK | 45 |
| APPENDIX 9..... | 46 |
| CITY DEMO & CEREMONIAL START..... | 46 |
| APPENDIX 10..... | 47 |
| SUPERSPECIAL STAGE | 47 |

1- INTRODUCTION

This Rally will be run in compliance with the FIA International Sporting Code and its appendices, the 2012 FIA Regional Rally Championships Sporting Regulations, IRC - Intercontinental Rally Challenge Regulations, the Regulations for the FIA European Rally Cups – Region East Europe, Dunlop National Rally Championship Sporting Regulations which comply with the FIA regulations and these Supplementary Regulations.

Modifications, Amendments and/or changes to these Supplementary Regulations will be announced only by numbered and dated Bulletins (issued by the organiser or the Stewards).

Additional information will be published in the Rally Guide issued on July-10-2012.

The 2012 FIA Regional Rally Championships Sporting Regulations can be found at www.fia.com

1.1 ROAD SURFACE**LEG 1**

| SS nr. | 1 – 3 | 2 – 4 | 5 | 6 | 7 | Total |
|---------|-------|-------|------|-------|-------|-------|
| Gravel | 100 % | 100 % | 99 % | 0 % | 100 % | 90 % |
| Asphalt | 0 % | 0 % | 1 % | 100 % | 0 % | 10 % |

LEG 2

| SS nr. | 8 – 10 | 9 – 11 | 12 | Total |
|---------|--------|--------|------|-------|
| Gravel | 100 % | 89 % | 99 % | 95 % |
| Asphalt | 0 % | 11 % | 1 % | 5 % |

1.2 OVERALL DISTANCE

1.2.1 SS Distance: 200,20 Km

1.2.2 Total Distance: 557,90 Km

2 – ORGANISATION

2.1. FIA titles for which the rally counts

IRC – Intercontinental Rallye Challenge

FIA European Rally Cups – Candidate Regional Cup East Europe

National titles for which the rally counts

Dunlop National Rally Championship – coef. 1,5

2.2. VISA numbers

| | |
|--------------------------------------|------------------------------|
| ASN VISA no. AI 010 | Issued on: 21.05.2012 |
| FRAS | Issued on: |
| Organiser License FRAS nr. 21 | 04 iunie 2012 |
| Organiser permit FRAS nr. 27 | 11 iunie 2012 |

2.3. ORGANISER'S NAME

AS SCORPION RACING TEAM

2.3.1. Address and contact details – Permanent Office

AS SCORPION RACING TEAM

Romania, 550362, Sibiu, Luptei Street, no. 25A

Tel.: +4 0269 427 800

Fax: +4 0269 427 800

E-mail: sorin.itu@raliulsibiului.ro

berti.panaiot@raliulsibiului.ro

Web Site: www.raliulsibiului.ro

2.4. ORGANISATION COMMITTEE

Klaus Werner Iohannis – Sibiu Mayor

Ioan Cindrea – Sibiu County Council Chairman

Ovidiu-Ioan Sitterli – Sibiu County Prefect

Sorin Itu – Chairman

Albert Panaiot – PR Manager

Alexandru Stancu

2.5. STEWARDS OF THE MEETING

Christian Leca – IRC/FIA (FRA)

Adrian Fodor – FRAS (ROU)

Victor Dragan – FRAS (ROU)

2.6. OBSERVERS & DELEGATES

FIA Observer

Mr. Luděk Kopecký (CZE)

FRAS Observer

Emanuel Ilina (ROU)

ASN Observer

Corneliu Popescu (ROU)

ASN Delegate

Ioan Olaru (ROU)

IRC Tehnical Delegate

Eddy PETERS (BEL)

André BAROLLE (FRA)

FRAS Tehnical Delegate

Lucian Girbaciuc (ROU)

Constantin Gadei (ROU)

Gabriel Dragan (ROU)

Radu Virgil (ROU)

2.7. SENIOR OFFICIALS

| |
|---------------------------------------------------------------------------------------------|
| <i>Clerk of the Course</i> Laurentiu Oros |
| <i>Deputy Clerk of the Course</i> Romeo Danila |
| <i>Secretary of the Stewards</i> Tamas Lang |
| <i>Chief timekeeping officer</i> Rares Florescu – 0748 769 036 – raresf@gmail.com |
| <i>Administrative checks secretary</i> Mihai Smaranda |
| <i>Administrative checks secretary</i> Mimi Oros |
| <i>Administrative checks secretary</i> Andreea Horvath |
| <i>Competitors relations officer IRC</i> Jean François Fauchille (FRA) |

Sibiu Rally Romania | 19-21 July 2012

| |
|----------------------------------------------------------------------------------------------------------------------------------------------------------------------|
| Competitors relations officer FRAS Lucian Balasiu |
| Chief timing officer Leonard Stefanescu |
| Marshal observator Florin Calangea |
| Chief route officer Badiu Ioan – 0722 135 527 – utu.badiu@raliulsibiului.ro |
| Chief Safety Officer Stefan Vasile |
| Deputy Chief Safety Officer Radu Vasile |
| Chief sweeping car Mihai Avram |
| Media Relations Berti Panaiot – 0748 776 237 – berti.panaiot@raliulsibiului.ro |
| Computer Systems and Webmaster Officers (Network și programare, webmaster și Design) Alexandru Stancu – +4 0748 073 812 – alex.stancu@raliulsibiului.ro |
| Medical Chief Officer |
| Deputy Medical Chief Officer |
| Nursing Chief Officer |
| SS Commanders SS 1, 3 SS 2, 4 SS 5, 12 SS 6 SS 7, 9, 11 SS 8, 10 |
| Results Processing Rares Florescu – 0748 769 036 – raresf@gmail.com |
| Timekeeping Equipment ONEST TIMING SRL Marian Dragomir |

2.8. HEADQUARTERS

Up to Sunday, July 15 – 20:00h:

Location:

AS SCORPION RACING TEAM

Romania, 550362, Sibiu, Luptei Street, no. 25A

Contacts:

Tel.: +4 0269 427 800

Fax: +4 0269 427 800

E-mail: sorin.itu@raliulsibiului.ro

berti.panaiot@raliulsibiului.ro

Web Site: www.raliulsibiului.ro

From Monday, July 16 – 14:00h:

Location:

Sibiu City Hall

Romania, 550178, Sibiu, Piața Mare

S. Brukenthal Street, no. 2

Contacts:

Mobile: +4 0748 0738 12

E-mail: alex.stancu@raliulsibiului.ro

Web Site: www.raliulsibiului.ro

Opening and closing schedule

| | | | |
|----|------|-----------|---------------|
| 16 | July | Monday | 12:00 / 22:00 |
| 17 | July | Tuesday | 08:00 / 18:00 |
| 18 | July | Wednesday | 08:00 / 18:00 |
| 19 | July | Thursday | 08:00 / 22:00 |
| 20 | July | Friday | 08:00 / 02:00 |
| 21 | July | Saturday | 08:00 / 22:00 |

2.9. Location of Media Centre and Press Rooms

Media Centre and Main Press Room

Sibiu City Hall, Piața Mare

Romania, 550178, Sibiu, S. Brukenthal Street, no. 2

2.10. Location of overnight Parc Fermé

Sibiu, Piața Mică

3 – PROGRAMME

OFFICIAL NOTICE BOARD LOCATION

Up to Sunday, JULY-15-2012 – 20:00h

AS SCORPION RACING TEAM

Romania, 550362, Sibiu, Luptei Street, no. 25A

From Monday, JULY-16-2012 – 14:00h

Sibiu City Hall

Romania, 550178, Sibiu, S. Brukenthal Street, no. 2

PROGRAMME

Monday, MAY-28-2012

| | | |
|--|--------------------------|----------|
| | Opening Date for Entries | Rally HQ |
|--|--------------------------|----------|

Monday, JUNE-11-2012

| | | |
|-------|------------------------|----------|
| 20:00 | Issuing of Rally Guide | Rally HQ |
|-------|------------------------|----------|

Friday, JULY-06-2012

| | | |
|-------|--------------------------|----------|
| 20:00 | Closure Date for Entries | Rally HQ |
|-------|--------------------------|----------|

Saturday, JULY-07-2012

| | | |
|-------|------------------------------------|----------|
| 18:00 | Closure Date for Co-driver details | Rally HQ |
| 22:00 | Publication of Entry List | Rally HQ |

Tuesday, JULY-10-2012

| | | |
|-------|----------------------------------------------------------|----------|
| 20:00 | Closing date for order of extra services in service park | Rally HQ |
| 20:00 | Closing Date to Order for Extra Material | Rally HQ |

DURING RALLY WEEK

Monday, JULY-16-2012

| | | |
|-------------|----------------------------------------------------------------------|------------|
| 09:00/21:00 | Opening of the service park – FIA, IRC and FRAS Seeded Drivers | Piața Mare |
| 12:00/22:00 | Opening of Rally Headquarters | Rally HQ |
| 12:00/22:00 | Start of Collection of Material and Documents (Issuing of Road-Book) | Rally HQ |

Sibiu Rally Romania | 19-21 July 2012

Tuesday, JULY-17-2012

| | | |
|---------------|----------------------------------------------------------------|-----------------------|
| 08:00/18:00 | Opening of Rally Headquarters | Rally HQ |
| 09:00/21:00 | Opening of the service park – FIA, IRC and FRAS Seeded Drivers | Piața Mare |
| 09:00 / 18:00 | Reconnaissance | According to Schedule |
| 14:00/20:00 | Opening of Media Centre and Accreditation | Rally HQ |

Wednesday, JULY-18-2012

| | | |
|-------------------|--------------------------------------------------------------------------------------------------------------------------------------------------------------------------------------------------------|--------------------------------------|
| 08:00/18:00 | Opening of Rally Headquarters | Rally HQ |
| 09:00 / 18:00 | Reconnaissance | According to Schedule |
| 09:00/20:00 | Opening of the Service-Park – All other Drivers | Piața Mare |
| 14:00/20:00 | Opening of Media Centre and Accreditation | Rally HQ |
| 16:00 | Closing date for Reconnaissance Registration | Rally HQ |
| 17:00/21:00 | Sealing & Marking – Spare Parts Optional Schedule - FIA, IRC and FRAS Seeded Drivers & All other Drivers <i>To be requested when Collection of Material and Documentation by each competitor</i> | Each Competitor area Service Park |
| 18:00 | Closing date for Shake Down Registration | Rally HQ |
| * 19:00/21:30 | Administrative Checks - FIA, IRC and FRAS Seeded Drivers | Rally HQ |
| ** 19:15/21:45 | Scrutineering, sealing & marking - FIA, IRC and FRAS Seeded Drivers | Piața Mică |

* A detailed timetable will be published.

** Order and deadline presentation time will be presented to each competitor during the Administrative Checking.

Thursday, JULY-19-2012

| | | |
|-------------------|---------------------------------------------------------|------------|
| 08:00/22:00 | Opening of Rally Headquarters | Rally HQ |
| 08:00/22:00 | Opening of Media Centre and Accreditation | Rally HQ |
| * 08:00/10:30 | Administrative Checks – All other Drivers | Rally HQ |
| ** 08:15/10:45 | Scrutineering, sealing & marking – All other Drivers | Piața Mică |

Sibiu Rally Romania | 19-21 July 2012

| | | |
|---------------|----------------------------------------------------------------------|----------------------|
| 10:00 / 12:30 | Shakedown – FIA, IRC and FRAS Seeded Drivers | Gușterița |
| 12:30 / 14:30 | Shakedown – FIA, IRC, FRAS Seeded Drivers and all other Drivers | Gușterița |
| 15:30 | FIA, IRC and FRAS Pre-event Press Conference | Media Center |
| 16:30 | Helicopters pilot's briefing | Rally HQ |
| 17:30 | Safety cars crew's briefing | Rally HQ |
| 18:00 | First Stewards' meeting | Rally HQ |
| 19:00 | Publication of Start List for City demo, Ceremonial Start, and LEG 1 | Rally HQ |
| ***20:00 | City demo | Sibiu Center |
| ****21:00 | Ceremonial Start Sibiu Rally | Podium Piața Mică |

* A detailed timetable will be published.

** Order and deadline presentation time will be presented to each competitor during the Administrative Checking.

*** See appendix for the City demo.

**** See appendix for the Ceremonial Start Sibiu Rally.

Friday, JULY-20-2012

| | | |
|---------------|--------------------------------------------------------|------------|
| 08:00/02:00 | Opening of Rally Headquarters | Rally HQ |
| 08:00/02:00 | Opening of Media Centre and Accreditation | Rally HQ |
| 11:00 / 12:00 | Autograph session | Piața Mare |
| 13:30 | RALLY START Start for LEG 1 | Piața Mare |
| 23:19 | Finish of LEG 1 | Parc Fermé |
| 01:30 | Second Stewards' meeting | |
| 01:45 | Publication of Partial Unofficial Classification LEG 1 | Rally HQ |
| 02:00 | Publication of Start List for LEG 2 | Rally HQ |

Saturday, JULY-21-2012

| | | |
|-------------|-------------------------------------------|----------------------|
| 08:00/22:00 | Opening of Rally Headquarters | Rally HQ |
| 08:00/22:00 | Opening of Media Centre and Accreditation | Rally HQ |
| 10:00 | Start for LEG 2 | Parc Fermé |
| 18:43 | Finish of the Rally | Podium Piața Mică |

Sibiu Rally Romania | 19-21 July 2012

| | | |
|-------|--------------------------------------------------|----------------------------------------------------|
| 19:00 | Prize Giving | Podium Ceremony Piața Mică Podul Minciunilor |
| 19:30 | FIA, IRC and FRAS Post-event Press Conference | Media Center |
| 20:00 | Final Scrutineering | Piața Mică |
| 21:30 | Publication of Provisional Final Classification | Rally HQ |
| 22:00 | Publication of Final Official Classification | Rally HQ |

4 – ENTRIES

4.1. CLOSING DATE FOR ENTRIES

See 3 - Programme

4.2. ENTRY PROCEDURE

Entry form must be sent by post, fax, and e-mail: entry@raliulsibiului.ro or directly at Rally Headquarters.

If this application is sent by fax or e-mail, the original Entry Form must reach the Organiser within 7 days of the entries' deadline.

Details concerning the co-driver can be sent in up to **Saturday, July 7th** – 18:00 hrs.

The entry form will only be accepted by Organising Committee if accompanied by Swift Bank Transfer Receipt.

4.3. NUMBER OF ENTRANTS ACCEPTED: 70

4.3.1. The organiser's selection will be the following:

1. FIA seeded drivers
2. IRC drivers
3. Official Team or Manufacturers entered drivers
4. FRAS seeded drivers
5. Classified drivers in the Dunlop National Rally Championship (at the time)
6. Drivers entered in the Dunlop National Rally Championship
7. Foreign drivers – EU and others
8. Romanian resident drivers

9. Remaining drivers, according to the driver performance and capacity / condition of the vehicle, at the Organisation Committee's exclusive criteria.

4.3.2. **Classes**

| Classes | Groups |
|---------|----------------------------------------------------------------------------------------------------------------------------------------------------------------------------------------------------|
| 2 | S2000-Rally: 1.6 T engine with a 30mm restrictor S2000-Rally: 2.0 Atmospheric Group R4 |
| 3 | Group N car over 2000cc (current N4) |
| 4 | RGT Cars |
| 5 | Group A car over 1600cc and up to 2000cc Super 1600 R2C (over 1600cc and up to 2000cc) R3C (over 1600cc and up to 2000cc) R3T (up to 1600cc / nominal) R3D (up to 2000cc / nominal) |
| 6 | Group A car over 1400cc and up to 1600cc R2B (over 1400cc and up to 1600cc) Kit-car over 1400cc and up to 1600cc |
| 7 | Group A car up to 1400cc Kit-car up to 1400cc |
| 8 | Group N car over 1600cc and up to 2000cc |
| 9 | Group N car over 1400cc and up to 1600cc R1B (over 1400cc and up to 1600cc) |
| 10 | Group N car up to 1400cc R1A (up to 1400cc) |

- Cars homologated as Kit cars, where the capacity is between 1400 and 1600 cc, may be accepted if they also comply with Article 255-6.2 "Weight" of Appendix J.
- Two-wheel drive cars equipped with a supercharged diesel engine with a nominal cylinder capacity of less than 2000 cm³ are accepted in Groups A and N.
- For S1600 homologated cars, it will be possible to use lapsed errata without any penalty.
- An FIA technical passport is mandatory for S2000 cars.

4.3.3. Dunlop National Rally Championship Classes
For the Dunlop National Rally Championship FRAS the following classes will be added:

| Classes | Groups |
|---------|----------------------------------------------|
| 11 | Grupa H car – over 2000 cc |
| 12 | Grupa H car – over 1600 cc and up to 2000 cc |
| 13 | Grupa H car – over 1400 cc and up to 1600 cc |
| 14 | Grupa H car – up to 1400 cc |

Notes: 1. The cars that ran out of homologation (expired homologation) but remain in compliance with homologation document and are in compliance with actual security norms, may be assimilated into Dunlop National Rally Championship at the class the cars were assimilated, on the basis of a request addressed to the Technical Commission of FRAS (Romanian Automobile Sport Federation). The Technical Commission with accept/refuse the request, after consulting National Rally Commission. Technical Commission of FRAS may extend the homologation on national plan for all the cars FIA homologated at group N and A, except their derivatives like A8, WRC, Kit Car, etc. where the accept of National Rally Commission is mandatory. Once the assimilation/extend of the homologation is accepted on national plan, it could not be withdrawn during the season.

2. **Group H** – the cars with expired homologation or without FIA homologation. The cars in this group with turbocharged engines and equivalent cylindrical capacity that exceeds 2000cc, will be equipped with a **34** mm air restrictor.

4.4. ENTRY FEES

4.4.1. The entry fees must be paid between May-28-2012 and July-06-2012

4.4.2. With the optional advertising proposed by the Organisers

| | |
|----------------------------------|--------------------------|
| Pack A / FRAS* | 300,00 / 600,00 € |
| Pack B / Private IRC** | 1000,00 € |
| Pack C / IRC Manufacturer | 1600,00 € |

*** Dunlop National Rally Championship Rally Fees**

Entry Fee/Crew:

- **600,00 €** for crew with car in classes 2-5 except juniors (drivers under 25 years old);
- **300,00 €** for crew with car in other classes.

Entry Fee/Team:

- **300,00 €** for team consisting of two crews;
- **375,00 €** for team consisting of three crews;
- **450,00 €** for team consisting of four crews.

**** FIA license required for the romanian drivers and co-drivers that want to participate in the IRC Championship.**

- 4.4.3.** Without the optional advertising proposed by the Organisers

| | |
|----------------------------------|--------------------------|
| Pack A / FRAS | 600,00 /1200,00 € |
| Pack B / Private IRC | 2000,00 € |
| Pack C / IRC Manufacturer | 3200,00 € |

4.4.4. SAFETY TRACKING SYSTEM EQUIPMENT – CAUTION FEE

During the Scrutineering, a caution fee of € 1.000,00 will be collected from all competitors (a credit card or cheque at the order of AS SCORPION RACING TEAM) over the Tracking System/GPS, refundable at the end of the rally, after the good receipt of the equipment.

- 4.4.5.** The following table describes the contents of the various entry packages:

| ITEMS | Pack C / IRC | Pack B / Private | Pack A / FRAS |
|---------------------------|-----------------------------|-----------------------------|--------------------------|
| | <i>Documentation</i> | | |
| Supplementary Regulations | website | | |
| Insurance Policy | 1 | 1 | 1 |
| Roadbook Sets | 3 | 2 | 1 |
| Rally Guide | website | | |
| Maps | 3 | 2 | 1 |
| Programme | website | | |

Sibiu Rally Romania | 19-21 July 2012

| | Vehicle Plates | | |
|--------------------------------------------------------------------------------------------------------------------------------------------------------------------------|------------------------------------------------------------------------------------------------|---------|---------|
| "Service" | 1 | 1 | 1 |
| "Auxiliary" | 4 | 2 | 1 |
| "Guest" | 3 | 1 | - |
| Individual Passes | | | |
| "Driver" | 2 | 2 | 2 |
| "Team Manager" | 1 | 1 | - |
| "Service" | 8 | 4 | 4 |
| "Vip Guest" (includes: transport by bus for special stages, reserved place for 3 days (Thu, Fri, Sat) at the restaurant LA TURN in Piața Mică) See appendix GUEST. | 3 | 1 | - |
| Other | | | |
| Service Park available space | 130 square meters for 1 car; 160 square meters for 2 cars; 200 square meters for 3 cars; | 60 sqm. | 40 sqm. |
| Water & electricity | YES | NO | NO |
| Waste oil and garbage collection | YES | YES | YES |
| Wifi | YES | YES | YES |
| GPS | YES | YES | YES |
| Shakedown | YES | YES | NO |

4.5. Taxes for Additional Plates and Individual Passes

4.5.1. Additional Vehicle Plates

"Service" = 100,00 €

"Auxiliary" = 50,00 €

"Guest" = 80,00 €

4.5.2. Additional Individual Passes

"Service" = 20,00 €

"Vip Guest" = 150,00 €

4.5.3. Additional Rally Documents

"Roadbook" = 50,00 €

4.6. PAYMENT DETAILS
Swift Bank Transfer Only

| | |
|---------------------|------------------------------------------|
| Bank | Raiffeisen Bank S.A. Agent. Sibiu |
| Bank Address | Sibiu, Piața Aurel Vlaicu, Sc. B |
| Account Name | Asociatia Scorpion Racing Team |
| Account Number | 0000 0600 0139 2902 |
| IBAN | RO39 RZBR 0000 0600 0139 2902 |
| BIC / SWIFT: | RZBRROBU |

4.7. REFUNDS

Entry fees will be refunded in full if the rally doesn't take place or to candidates whose entry has not been accepted. The organiser may refund 50% of the entry fee to those competitors who for reasons „force majeure” (duly certified by their ASN), were unable to start in the rally. With the request of entry fee refund the competitor must send the organiser a certificate of „force majeure” given by his own ASN.

| |
|----------------------|
| 5 – INSURANCE |
|----------------------|

The competitors will be insured on all special stages by an insurance of civil liability against all third party risks of 1.000.000 LEI indemnity, made by the organizer.

5.1. The insurance cover will come into effect from scrutineering and will cease at the end of the event or at the moment of retirement, disqualification or exclusion.

5.2. ACCIDENTS IN ROUTE LIAISON PROCEDURE

In case of an accident, in the route liaison, the competitor or his representative must notify in writing the Clerk of the Course in as short a time as possible and in a maximum of 3 hours. He must explain the circumstances under which the accident occurred.

Likewise he must mention the names and addresses of any witnesses.

5.3. The service vehicles, even those bearing the plates “Service” issued by the organiser, may never be considered as official participants in the rally. They are therefore not

covered by the insurance policy of the rally and remain the sole responsibility of their owners.
It's the same for the cars used by the competitors for the reconnaissance.

The AS SCORPION RACING TEAM, Organising Committee, FIA, FRAS, ACR, the rally officials and the volunteers decline any liability whatsoever for any accident which may occur to or be caused by any competitor and/or competing car throughout the rally. In case of accident, competitors and drivers agree to hold harmless and keep indemnified the event's promoters and Organisers against all claims.

6 – ADVERTISING AND IDENTIFICATION

The Organiser will provide each crew with the number identification, Rally Plates, Compulsory and Optional Advertising (when applicable), which must be affixed to their car prior to Scrutineering, as laid down in **APPENDICES 4 and 6**.

6.1. Advertising

6.1.1. Compulsory

“SIBIU RALLY ROMANIA” – plates (1), (3), (4), (5)

“ROMANIA” – plates (6)

IRC – plates (A1) (A2) (A3) (A4)

6.2. COMPETITION NUMBERS

6.2.1. DOOR PANELS

- Two front door panels measuring 67 cm wide by 17 cm high including a 1 cm white surround. Each of these panels shall comprise a matt black competition number box which shall always be at the front of the panel. Numerals will be fluorescent yellow (PMS 803), 14 cm high and with a stroke width of 2 cm.

- Each panel shall be placed horizontally at the leading edge of each front door with the number at the front. The top of the plate shall be between 7 cm and 10 cm below the lower limit of the window.

- No signage, other than the colour scheme of the car, shall be placed within 10 cm of the panel.

6.2.2. REAR WINDOW

One rear window panel measuring a maximum of 30 cm wide and 10 cm high shall be positioned at the rear window, and centred. An adjacent area of 15 cm² shall contain the fluorescent orange (PMS 804) 14 cm high competition number on a clear background. This number may be reflective and must be visible from the rear at eye level.

6.2.3. SIDE WINDOWS

Two numbers for each rear side window which shall be 20 cm high with a stroke width of 25 mm, coloured fluorescent orange (PMS 804), and may be reflective. These numbers shall be placed at the top of the rear side windows adjacent to the crew's names.

6.2.4. ROOF PANEL

One roof panel, 50 cm wide by 52 cm high, to be placed on the roof with the top towards the front of the car. A matt black competition number, 5 cm wide by 28 cm high, will be displayed on a matt white background 50 cm wide by 38 cm high.

6.2.5. FRONT PLATE

One plate fitting into a rectangle 43 cm wide by 21,5 cm high which shall include the full name of the rally.

Such an infringement shall result in a cash penalty of € 500,00.

6.2.6. One missing competition number results in a cash penalty € 250,00. Two missing competition numbers result in exclusion.

6.3. EMERGENCY PLATES

6.3.1. "SOS" Emergency Number

Two plates with the emergency number, designated as "SOS", will be issued by the Organisers, to which any participant or spectator can call, in case of emergency or accident occurred during the Rally.

6.3.2. Affixation

These plates must be affixed on the participant vehicle, one inside, the other outside, both in clearly visible locations.

7 – TYRES

7.1. The use of slick tyres is prohibited.

7.2. Tyre Marking

Tyre marking is obligatory for all the competitors.

During the rally, the following procedures will be followed:

- All the tyres will be marked in accordance with the Appendix IV of the FIA Regional Rallies Championships Sporting Regulations;
- At the start of each Day, the four tyres mounted on the car and the two possible spare tyres will be marked using special sticker.
- At the start of the following sections (exit from each service Park or service zone), the same marking operation will be carried out using a different sticker;
- Tyres which have not been used on the previous section or which, even if they have already been used, are nevertheless in conformity with the regulations, may be marked again;

A tyre marking zone reserved exclusively for this purpose shall be established at the exit of the service Park, immediately after the refuelling zone and the tyre marking sign shall denote its entrance and exit.

For the sole purpose of assisting with the tyre marking procedure, one member of the team of each crew, wearing a reflective green tabard, according to Road Traffic Laws may have access this zone and only for the period of time during when the car is in that zone.

7.3. Means of control

At any time during the rally, controls may be carried out to check the conformity of the tyres.

7.4. Vehicle equipment

Each entering vehicle is allowed to carry, on-board and properly fixed, a maximum of two spare wheels.

At all times during the event, the tread depth of the tyres fitted on the car must not be less than 1.6mm over, at least, $\frac{3}{4}$ of the thread pattern.

7.5. Sanctions

Any breach of the tyre regulations will be reported to the stewards, who may impose a sanction as provided for in Articles 152 and 153 of the Code.

8 – FUEL

8.1. GENERAL

- 8.1.1. Competitors may only refuel in the RZ's or remote RZ's designated in the road book, except as detailed under **Article 42 of the FIA Regional Rallies Championships Sporting Regulations**.
See APPENDIX 8.

- 8.1.2. Solely for the purpose of assisting with the refuelling procedure of their car, two team members of each crew, identified with the official passes supplied by the organizers (Service) and wearing a reflective green tabard, according to Road Traffic Laws, may access this zone.

- 8.1.3. In the event of a breakdown, the car concerned may be pushed out of the zone by the crew, officials and/or the two team members without incurring a penalty.

8.2. PROCEDURES

- 8.2.1. Only actions inside a RZ directly involved in the refuelling of the competing vehicle are permitted.
- 8.2.2. In all RZ's, a 5 kph speed limit will apply.
- 8.2.3. Engines must be switched off throughout the refuelling operation.
- 8.2.4. It is recommended that the crew stay outside the car during refuelling; however, should they remain inside, their safety seat belts must be unfastened.

8.3. PERSONNAL PROTECTIVE EQUIPMENT (PPE)

- 8.3.1. Team members assisting during refuelling, should wear industry homologated PPE for hydrocarbons handling, such as safety glasses, protective rubber gloves, safety shoes and anti-static clothing.
- 8.3.2. It is highly recommended that the team members to wear fire-resistant clothing.

9 – RECONNAISSANCE

According with **Article 20 of the FIA Regional Rallies Championships Sporting Regulations.**

9.1. REGISTRATION

9.1.1. All competitors who wish to part in reconnaissance must register at Rally Headquarters to get all the necessary documentation before starting, according to The Programme schedule.

9.1.2. The crossing of the competitors on the rallies special stages, regardless of how or used vehicle, from the date of publication of this regulations, Friday 01.06.2012, 00:00 and until the reconnaissance, Tuesday 17.07.2012, 09:00 is considered a violation of the reconnaissance schedule.

9.1.3. Organiser will supply 2 stickers that must be affixed on the windshields (co-driver's side), one on the front, and other on the rear of the reconnaissance car.
They must be visible for the duration of the reconnaissance period.

9.1.4. Time Cards

A time card valid for up to 2 (two) passages over each special stage – considered each version - will be supplied and must be carried in the car and presented at the beginning (Start) and at the end (Stop) of each SS and, if requested, to the intermediate points distributed along the itinerary.

Failure to produce this card will result in refusal to participate in the reconnaissance. These cards must be returned to the Rally Office on Wednesday 18th of July and Thursday 19th of July at the Administrative Checks.

9.1.5. Timetable

Reconnaissance schedule for all drivers will take place as described in Appendix 2 of the present Supplementary Regulations.

9.2. SPECIFIC RESTRICTIONS AND SPEED LIMITS

Crews are authorized to drive a maximum of 2 (two) passages through each special stage, exception for the SS

6 Paltinis Night and SS 7 Șanta Night in which crews are authorized to drive only 1 (one) passage by night and SSS 5, 12 in which crews are authorized to drive only one complete lap*, at a reduced speed and fully respecting the local Road Traffic Laws, including speed limits, on the forest roads the speed limit is 60km/h.

Under no circumstances may crews drive in the opposite sense of the race route at the Special Stages, exception for the SS 6 Paltinis (asphalt) that can be crossed in both directions.

Violation of the reconnaissance schedule and rules will attract the interdiction to participate at the rally, without refunding the entry fee and a € 1000,00 penalty fee will (the fee will be collected by the rally organizer).

***See the reconnaissance schedule Appendix 2.**

9.2.1. The presence of a driver and/or his co-driver on a special stage, in any way whatsoever, is considered as reconnaissance.

9.2.2. Special Stages will be supervised by Rally Officials and competitors must follow their instructions.

9.2.3. During reconnaissance, crews must stop at the start and at the finish (Stop) of each stage, which will be duly signposted.

Rally Officials will endorse the reconnaissance time card in order to control the pass of vehicles over the stages.

No more than two persons are permitted in the car during each passage through a special stage, these persons being the driver and the co-driver of the competing crew.

9.3. Speed Control
Speed will be monitored by police radar.

- Nicolae Balcescu Avenue: 5 km/h
- Piața Mare (Service Parc): 5 km/h
- Piața Mică: 5 km/h

Speed Limits on Romanian Roads

- See Road Book (Symbols page).

9.3.1. Speeding Fines

Speeding during reconnaissance will incur a fine applied by the clerk of the course as follows:

Per km per hour over the speed limit

- Priority A drivers € 25
- Priority B drivers € 15
- All other drivers € 10

The amount of this fine will be unaltered by any fine imposed by the police.

9.3.2. The fine will be doubled in case of a second offence committed during reconnaissance.

9.4. Reconnaissance Cars

In accordance with **Article 20.1 of the FIA Regional Rallies Championships Sporting Regulations.**

9.5. Tyres for reconnaissance cars

Tyres used for reconnaissance cars shall be free tyres for gravel.

9.6. Sanctions

Any crew infringing these regulations shall be forbidden to start the rally, at the pronouncement of the Stewards.

| |
|-----------------------------------|
| 10 – ADMINISTRATIVE CHECKS |
|-----------------------------------|

10.1. Documents to be presented:

- FIA or ASN entrant's license
- Driver and Co-driver competition licenses
- Driver and Co-driver passports or identification
- Driver and Co-driver driving licenses
- ASN authorisation, for all foreign competitors
- Vehicle documents (registration and property)
- Car Owner authorisation to participate in the rally (If the owner is not the Competitor/driver)
- Car Insurance cover certificate
- Car Insurance registration papers

10.2. Timetable

See 3 – Programme

A detailed timetable will be published.

10.2.1. Location

Rally Headquarters
Sibiu City Hall
Romania, 550178, Sibiu, Piața Mare

10.2.2. Time Control

A Time Control will be installed at the entrance.
- Any delay will be penalized with €10,00 per minute or fraction of a minute.

| |
|------------------------------------------------|
| 11 – SCRUTINEERING, SEALING AND MARKING |
|------------------------------------------------|

11.1. SEALING AND MARKING

See 3 – Programme

Location: Each Competitor area - Service Park

11.2. SCRUTINEERING VENUE AND TIMETABLE

See 3 – Programme

Order and deadline presentation time will be presented to each competitor during the Administrative Checking.

11.2.1. Location*

Sibiu, Piața Mică

** See Road Book section Scrutineering, Sealing and Marking*

11.3. MUD FLAPS

Mud flaps are permitted according to **Appendix J Article 252.7.7.**

11.4. WINDOWS

The use of silvered or tinted films are permitted according to **Appendix J Article 253.11.**

11.5. INSTALLATION OF SAFETY TRACKING SYSTEM

The equipment will be fixed in the vehicle during the Scrutineering. It does not need any previous preparation. Operation details to be informed by Communication.

12 – OTHER PROCEDURES

12.1.1. CITY DEMO

| | | |
|---------------------------|-----------|--------------------------------------------------------------------------------------------|
| Thursday-19-2012 20:00 | City demo | Piața Mare Nicolae Bălcescu Ave. Tribunei Street Mitropoliei Street Piața Mare |
|---------------------------|-----------|--------------------------------------------------------------------------------------------|

- The City Demo is compulsory for all competing cars and Crew Members, and will act as part of the Ceremonial Start.

- Speed limits:

- Nicolae Balcescu Avenue - 5 km/h
- Piața Mare (Service Park) - 5 km/h
- Piața Mică - 5 km/h

*See Appendix 9 City Demo & Ceromonial Start.
A detailed Timetable will be published.*

12.1.2. CEREMONIAL START

| | | |
|---------------------------|-----------|----------------------|
| Thursday-19-2012 21:00 | City demo | Podium Piața Mică |
|---------------------------|-----------|----------------------|

- The Ceremonial Start is compulsory for all competing cars and Crew Members, and will take place on the Podium located in Piața Mică, Sibiu.

- Crew members must wear homologated competition overalls or the official Team wear.

- The start interval will be one minute to all competitors.

- The Ceremony will be carried out in normal order (number 1 will be the first).

See Appendix 9 City Demo & Ceremonial Start.

A detailed Timetable will be published.

12.1.3. START OF THE RALLY

| | | | | |
|--------|----|------|-------|------------|
| Friday | 20 | July | 13:30 | Piața Mare |
|--------|----|------|-------|------------|

12.1.4. Start intervals

The start interval during the rally, will be minimum of 2 (two) minutes for all drivers.

12.1.5. Start order

Leg 1

Competition Number

Leg 2

As per Classification of Leg 1, at the end of the Leg 1.

12.1.6. STARTING SYSTEM OF SPECIAL STAGES

The start will be carried out by an electronic countdown system, counting down by seconds, clearly visible to the crew from the start line, and synchronized with a starting light system, as follows:

Between 30 and 6 seconds = Red Light

Between 5 and 1 seconds = Yellow Light

0 seconds = Green Light

Green light will be on, till the end of time allowed to start (20 seconds after start time). This system will be electronically coupled to a detection device that records any False Start.

Distance between the Start line and the False start detection cell is 40 cm.

Should the electronic start system fail, the start will be given as specified in the article **31.3 of the FIA Regional Rallies Championships Sporting Regulations**.

12.2. FINISH PROCEDURE

The finish of the rally is at TC 12C – Finish Area in.

12.2.1. General Classification

The first three classified competitors will then drive their cars onto the Podium (where will stop to be congratulated) in reverse order and then the crews must drive their cars to the arrival Parc Fermé as indicated in the Road-book.

After this they will participate at the Prize Giving Ceremony – Piata Mica – Podul Minciunilor – Saturday, July 21st, 18:30.

12.2.2. IRC Classification

1st-2nd-3rd General Classification

1st Manufacturer

1st-2nd-3rd Production Cup

1st-2nd-3rd 2WDC

1st Manufacturer 2WD

The Podium ceremony will be according IRC Podium Procedure and Podium protocol.

12.2.3. FIA Championship Classification

- General classification of FIA European Rally Championship for drivers and co-drivers
- Other classifications of FIA ERC for drivers and co-drivers (ERC 2WD Cup and classes)

12.2.4. Romanian Classification

The first three best Classified Romanian crews will also drive their cars onto the Podium (Where will stop to be congratulated) in reverse order.

After that ceremony, crews must drive their cars to the arrival Parc Fermé as indicated in the Roadbook.

Rally rankings are prepared in compliance with 2012 Dunlop National Rally Championship Regulations.

The following rankings are prepared:

- overall ranking (classes 1-10),
- class ranking,
- team ranking,
- "JUNIOR" ranking,
- rookies ranking
- single brand cup ranking,
- two wheel drive cars ranking,
- diesel cars ranking.

12.2.5. All the other competitors will also pass through the podium and drive to the arrival Parc Fermé as indicated in the Road-book.

12.3. PERMITTED EARLY CHECK-IN

Crews may check in early without incurring a penalty at:

TC 7A - Parc Fermé / Tehnical Zone

TC 7C - Flexi-Service out / Parc Fermé in (END OF LEG 1)

TC 12C - End of Rally

12.4. SUPER SPECIAL STAGES PROCEDURES AND RUNNING ORDER

- Location: rallycross track, near Firefighter's training base, Strand Neighborhood
- start – 2 crews in parallel
- length - 2,50 km ;
- number of laps: 1 (one) – complete (when the crew reaches the point it started from);
- surface: gravel.

The competitors will check into TC 5, TC 12 and will take the start in SSS 5,12 at the Indication of the Clerk of the Course or the marshal from the post (after the previous competitor finished his evolution)

SS 5,12 is considered runned if the route from the SSS Appendix was followed.

12.4.1. Penalties at Superspecial

Failure in completing the right course (the crew does not respect the indicated route or does less "circles") is penalized by gaining the weakest time from its group and another 10 seconds in addition.

12.4.2. If a car fails to complete the SSS, it will be placed at the road section after the finish control area (stop) of the SSS and the crew will be allocated a stage time of the Double fastest time plus 1 minute.

In such a case, the competitor will be deemed to have completed the Stage at its due time and be subjected to all the normal rules, regulations and service restrictions of the rally.

12.5. TIME CARD CHANGE DURING THE RALLY

Time cards will be issued at the following time controls:
0; 2B; 5B; 7D; 9B; 11B.

12.6. OFFICIAL TIME USED DURING THE RALLY

The official time during the Rally is the Romanian time zone.

12.7. RESTART AFTER RETIREMENT / RALLY 2

Any competing car which fails to finish Leg 1 will be permitted to restart the next day, as described in the

Article 39.6 of the FIA Regional Rallies Championships Sporting Regulations.

12.7.1. Information of Intention of Readmission

Any car which retires in accordance with the above may be repaired.

However, the car must report to the overnight Parc Fermé, no later than 2 hours before the scheduled start of 1st car on next Leg.

The entrant must advise the Clerk of the Course in writing, prior to Saturday, 21st July, 02h15, of the intention to have the car re-scrutineered.

The crew will be informed of the time for re-scrutineering.

12.8. EXCESSIVE SPEED DURING THE RALLY (Liaison routes)

Speeding during the Rally Liaison Routes, will incur a fine applied by the clerk of the course as follows:

- Per km per hour over the speed limit.
- Priority A drivers € 25
- Priority B drivers € 15
- All other drivers € 10

The amount of the fine will be unaltered by any fine imposed by the police.

12.9. OTHER INFRINGEMENTS TO TRAFFIC LAWS

Throughout the Rally, crews must strictly observe local traffic laws. Any crew, which does not comply with these traffic laws, shall be subjected to the penalties set out below:

- 1st infringement: € 250,00;
- 2nd infringement: a 5-minute time penalty;
- 3rd infringement: exclusion.

12.10. SERVICE PARK

12.10.1. Location

Sibiu, Piața Mare

12.10.2. Opening of Service Park

Access schedule for Service Vehicles

| | | | |
|-----------|---------|---------------|----------------------------------|
| Monday | JULY-16 | 09:00 - 21:00 | FIA, IRC and FRAS Seeded Drivers |
| Tuesday | JULY-17 | 09:00 - 21:00 | FIA, IRC and FRAS Seeded Drivers |
| Wednesday | JULY-18 | 09:00 - 20:00 | All other drivers |

12.10.3. Vehicles Allowed in Service Parks

Only one service vehicle per competing car starting the rally is allowed inside the Service Park throughout the rally. These vehicles must be clearly identified by means of “Service” plate issued by the Organisers and affixed on the front windscreen. Other team vehicles, identified by means of “Auxiliary” plates, issued by the Organisers, will be permitted to park in the vicinity, where and if space is available.

All Unloading should take place in the designated trailer park zone see Appendix 11.

No trailers should be taken to the Service Park.

Service vehicles are permitted to enter service only once a day.

12.10.4. Service Park Rules

Cleanliness and safety of your stand

Each competitor is responsible for the behavior of its service team members. In the service park, all competitors must:

- In the Service Park is prohibited fixing tents or other objects with nails or other materials that lead to the deterioration of the cubic stone in Piata Mare. Failure to comply will result in a cash penalty of € 500,00.

- keep near to any racing car **a fire extinguisher for A, B, and C type fires of a minimul capacity of 5 kg**, having been checked within the last 2 years.
- place under each racing car **a waterproof and resistant to hydrocarbons ground sheet** of a surface equal to that of the car (3 x 5 m minimum).
- **take care of his waste removal** when his team leaves the parks at the latest; failure to comply will result in a cash penalty of € 500,00

The penalty for the extinguisher or ground sheet failure in the parks is € 200,00

Oil, waste water emtying, car wash and staking out on the ground are forbidden in the Service Parks.

Oil is collected by a specialized company.

Speed Limit in the Service Park is 5 km/h. Failure to comply with this limit shall result in a penalty applied by the Stewards.

12.11. SHAKEDOWN

12.11.1. Participants

The presence of all the FIA, IRC is mandatory, being facultative to the other drivers.

12.11.2. Location:

Sibiu, Gușterița Neighborhood (the road towards the Monumental Cross)

Length: 2,1 km, see Shakedown Roadbook.

12.11.3. Shakedown entry fee for FRAS drivers: € 100,00

12.11.4. Schedule

See 3 Program

12.11.5. Start Intervals

The start interval will be minimum of 1 (one) minute.

12.11.6. The reconnaissance of the Shakedown track will be made during the reconnaissance program.

Sibiu Rally Romania | 19-21 July 2012

12.11.7. The equipment for the driver/co-driver at the shakedown must be the same with the one used during the rally (overall, helmet, boots).

12.11.8. Disclaimer

Any person on board the car during shakedown who is not entered for the rally must have signed the disclaimer – in the **Appendix 7** of this Supplementary Regulations – which must reach the Clerk of the Course until July 19 - 11h00, accompanied by photocopy of Passport or Identity Card, waving the Organisers as well the driver and/or a competitor of any consequence that may result from an accident.

12.11.9. Any private tests excepting the Shakedown are forbidden in Sibiu County, the deviation from this provision attracting a 1000,00 € fee.

13 – IDENTIFICATION OF OFFICIALS

| | |
|-------------------|--------------|
| Guest | Gold |
| Competitor | Black |
| Stewards | White |
| Marshal | Blue |
| Media / Eurosport | Silver |
| Service | Orange |
| Organiser | Yellow |
| Volunteer | Light Yellow |

14 – PRIZES

- 14.1. General Classification**
1st, 2nd and 3rd Cup + Cup
- 14.2. IRC General Classification**
1st, 2nd, 3rd Trophy + Trophy
- 14.3. IRC Winning Manufacturer**
1st Trophy
- 14.4. IRC Production Cup Classification**
1st, 2nd, 3rd Cup + Cup
- 14.5. IRC 2WDC Classification**
1st, 2nd, 3rd Trophy + Trophy

Sibiu Rally Romania | 19-21 July 2012

- 14.6. IRC Winning Manufacturer 2WD
1st Trophy**
- 14.7. FIA European Rally Championship and FIA ERC 2WD
1st, 2nd, 3rd Cup + Cup**
- 14.8. Romanian Crews Classification
1st, 2nd, 3rd Cup + Cup**
- 14.9. Classes Classification
1st Cup + Cup**

15 – FINAL CHECKS

15.1. Final Checks

| | | | | |
|-----------------|-----------|-------------|--------------|----------------------------------------------------------------------------------------------------|
| Saturday | 21 | July | 20:00 | SERVICE CITROEN, SIBIU, Com. Selimbar, Sos. Sibiului, nr. 28, SIBIU, cod poștal 550370 |
|-----------------|-----------|-------------|--------------|----------------------------------------------------------------------------------------------------|

15.1.1. Those crews selected for final scrutineering by the stewards will be notified and are required to provide the proper equipment and technicians at the venue to assist in the operation.

15.1.2. It is not mandatory for the crews to be present. However, they must be represented by a representative of the competitor duly designated in writing.

15.2. Protest fee: € 500,00

15.2.1. If the protest requires the dismantling and the re-assembly of different parts of the car, the claimant must pay an additional deposit:

15.2.1.1. For a protest involving only a clearly defined part of the car (engine, transmission, steering, breaking system, electrical installation, body work, etc.): € 1.000,00

15.2.1.2. For a protest involving different parts of the car:
€ 2.000,00

15.2.2. The expenses incurred by the work and by the transport of the car shall be born by the claimant if the protest is

unfounded, or by the competitor against whom the protest is lodged if it is upheld.

- 15.2.3.** If the protest is unfounded, and if the expenses incurred by the protest (Scrutineering, transport, etc.) are higher than the amount of the deposit, the difference shall be borne by claimant. Conversely, if the expenses are less, the difference shall be returned to them.

15.3. Appeal fees

15.3.1. Sum for a national appeal fee (ASN / FRAS)

- 15.3.1.1.** All the protests and appeals must be submitted in accordance with the regulations

Protest may be also submitted by the crews who started, but dropped out during the rally. Any protest is submitted, in writing, to the Clerk of the Course, accompanied with its fee, stipulated in the Federation's regulations. The protests without paid fee and the verbal ones will not be considered. The right to protest is held only by the crew entered in the competition or its representative, registered for this purpose at FRAS, on the license application.

- 15.3.1.2.** The protest fees are the following:

- protest on sports line - **200** euro;
- technical protest - **1000** euro
- technical protest for a specific part - **500** euro
- technical protest for an ensemble – **1000** euro
- technical protest for the competition car – **2500** euro

- 15.3.1.3.** Protests against the results or rankings will be submitted within maximum 30 minutes after displaying the results at the official display panel.

15.3.1.4. Appeal

Against the decisions taken by the Clerk of the Course, the ones who consider anything wrong must send the appeal to FRAS. Lack of notification or deposit of it outside the regular time – would decay the right of appeal

15.3.1.5. The appeal must be submitted to the FRAS Secretary within **maximum 48 hours of receipt** of the notification from the College of Stewards. Its transmission is allowed in the specified time and by fax, e-mail, etc, with the copy of the payment order which proves the payment of the fee, calculated in accordance with the regulations.

15.3.1.6. The protest/appeal fees are:

- **200 euro**, for appeals submitted to race clerks (Clerk of the Course)
- **400 euro**, for appeals submitted to the Competition Committee and the Discipline Committee
- **500 euro**, for appeals submitted to the Appeal Committee

15.3.2. Sum for an international appeal fee (FIA): **€ 12.000,00**

APPENDIX 1 – ITINERARY – LEG 1

APPENDIX 1 – ITINERARY – LEG 2

APPENDIX 2 – RECONNAISSANCE SCHEDULE

*Orar recunoasteri
Reconnaissance Schedule*

Drumurile sunt deschise – INTOTDEAUNA ACEEASI RUTA
Conduceti cu grija PENTRU PS
Roads Open - Drive carefully ALWAYS SAME ROUTE of S.S.

Marți, 17 Iulie 2012

Tue, JULY-17-2012

| Proba Speciala Special Stage | Localități Roads | Orar Schedule |
|---------------------------------------------|-------------------------------------------------------------------------|----------------------|
| 1 / 3 DOBÂRCA | Sibiu – Cristian – Sacel – Saliste – Tilisca – Rod – Poiana Sibiului | 09:00 / 18:00 |
| 2 / 4 CRINȚI | Sibiu – Cristian – Sacel – Saliste | 09:00 / 18:00 |
| 8 / 10 GĂTU BERBECULUI | Sibiu – Cîsnădie – Sadu – Rau Sadului – Sadurel | 09:00 / 18:00 |
| 9 / 11 ȘANTA MAX | Sibiu – Rasinari – Paltinis | 09:00 / 18:00 |

Sibiu Rally Romania | 19-21 July 2012

| | | |
|------------------------------------------------------------------------------|--|-----------------------------------------------------------------|
| Orar recunoasteri Reconnaissance Schedule | | |
| Drumurile sunt deschise – Conduceti cu grija Roads Open - Drive carefully | | INTOTDEAUNA ACEEASI RUTA PENTRU PS ALWAYS SAME ROUTE of S.S. |

| | |
|-------------------------|-------------------|
| Miercuri, 18 Iulie 2012 | Wed, JULY-18-2012 |
|-------------------------|-------------------|

| Proba Speciala Special Stage | Localități Roads | Orar Schedule |
|------------------------------------|---------------------|------------------|
|------------------------------------|---------------------|------------------|

| | | |
|----------------|-------------------------------------------------------------------------|---------------|
| 1 / 3 | Sibiu – Cristian – Sacel – Saliste – Tilisca – Rod – Poiana Sibiului | 09:00 / 18:00 |
| DOBÂRCA | | |

| | | |
|---------------|------------------------------------|---------------|
| 2 / 4 | Sibiu – Cristian – Sacel – Saliste | 09:00 / 18:00 |
| CRINȚI | | |

| | | |
|----------------------------|----------------------------------------------------|---------------|
| 8 / 10 | Sibiu – Cismadie – Sadu – Rau Sadului – Sadurel | 09:00 / 18:00 |
| GĂTU BERBECULUI | | |

| | | |
|------------------|-----------------------------|---------------|
| 9 / 11 | Sibiu – Rasinari – Paltinis | 09:00 / 18:00 |
| ȘANTA MAX | | |

| | | |
|------------------|-------------------|---------------|
| | Sibiu – Gusterita | 13:00 / 18:00 |
| SHAKEDOWN | | |

| | | |
|---------------------------|------------------------|---------------|
| 5 / 12 | Sibiu – Cartier Strand | 15:00 / 18:00 |
| SUPER SPECIALA | | |

| | | |
|---------------------------|------------------|---------------|
| 6 | Sibiu – Rasinari | 22:00 / 23:30 |
| PĂLTINIȘ NIGHT | | |

| | | |
|------------------------|-----------------------------|---------------|
| 7 | Sibiu – Rasinari - Paltinis | 22:30 / 24:00 |
| ȘANTA NIGHT | | |

APPENDIX 3 – COMPETITORS' RELATIONS OFFICERS

Competitors relations officer IRC

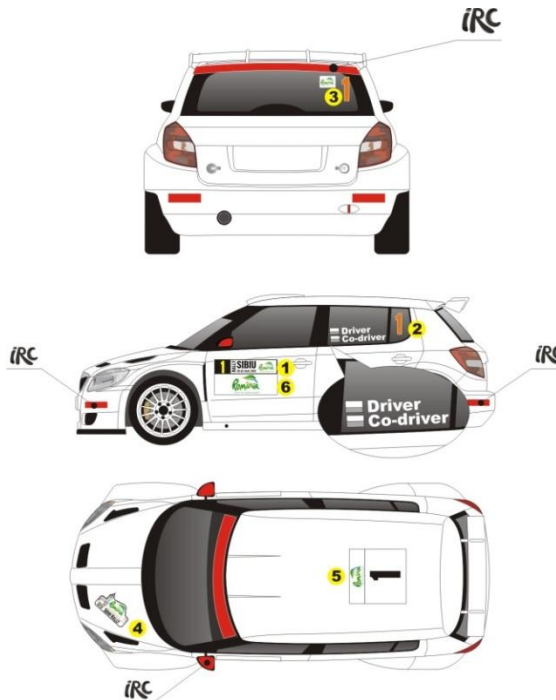
Jean François Fauchille (FR)

SOS EMERGENCY NUMBER

+4 0756 247 407

+4 0756 247 435

APPENDIX 4 – COMPETITION NRS. & ADVERTISING



(1) DOOR PANELS - Two front door panels measuring 67 cm wide by 17 cm high including a 1 cm white surround. Each of these panels shall comprise a matt black competition number box which shall always be at the front of the panel. Numerals will be fluorescent yellow (PMS 803), 14 cm high and with a stroke width of 2 cm. The remainder of this door panel is reserved for the organiser.

Each panel shall be placed horizontally at the leading edge of each front door with the number at the front. The top of the panel shall be between 7 cm and 10 cm below the lower limit of the window.

(2) SIDE WINDOWS - Numbers for each rear side window, coloured fluorescent orange (20 cm high). These numbers shall be placed at the top of the rear side windows adjacent to the crew's name.

(3) REAR WINDOW - One rear window panel measuring a maximum of 30 cm wide and 10 cm high shall be positioned at the rear window, and centred. An adjacent area of 15 cm² shall contain the fluorescent orange 14 cm high competition number on a clear background.

(4) FRONT PLATE - One plate fitting into a rectangle 43 cm wide by 21,5 cm high which include the competition number.

(5) ROOF PANEL - One roof panel, 50 cm wide by 52 cm high, to be placed on the roof with the top towards the front of the car.

(6) COMPULSORY ADVERTISING - Plates measuring 67 cm wide by 19 cm high, placed horizontally, under the panel (1).

**APPENDIX 5 – Overalls, Helmets
Extracts from FIA Appendix L**

OVERALLS

Flame-resistant clothing

All drivers and co-drivers must wear overalls as well as gloves (optional for co-drivers), long underwear, a balaclava, socks and shoes homologated to the FIA 8856-2000 standard (Technical List N°27).

Users must ensure that garments are not too tight, as this reduces the level of protection.

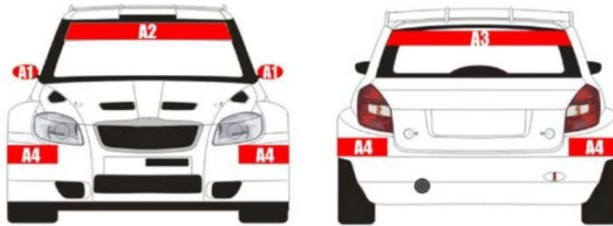
Embroidery sewn directly onto the overalls shall be stitched onto the outermost layer only, for better heat insulation. Backing material of badges and thread used for affixing them to the overalls must be flameproof (see Appendix 1 of the FIA 8856-2000 Standard for detailed requirements and instructions for use).

Helmets

Helmets homologated to one of the standards listed in FIA Technical List N° 25.

Helmets homologated to the FIA Standard 8860 - Advanced Helmet Test Specification (Technical List N°33), must be worn by P1 and P2 drivers.

APPENDIX 6 – IRC COMPULSORY ADVERTISING



(A1) Two side mirrors stickers



(A2) Front Windscreen 15 cm stripe



(A3) Rear screen 8 cm stripe



(A4) Rear and front bumpers stripes



APPENDIX 7 – SHAKEDOWN DISCLAIMER

Deadline for presentation July-19-2012

**To the Clerk of the Course
SIBIU RALLY ROMANIA**

(Name) _____,
ID nr./Passport nr. _____, declares that accepts
full responsibility for any accident that may occur during Shakedown,
and waives the Organizers of SIBIU RALLY ROMANIA, as well the
driver and/or a competitor of any consequence that may result from
the referred accident.

Date: ____/____/____ (dd/mm/yyyy)

The Declarer

Signature according to ID or Passport

Attach: *Copy of ID or Passport*

APPENDIX 8
EMPTYING THE TANK AND/OR REFILLING
IN THE SERVICE PARK

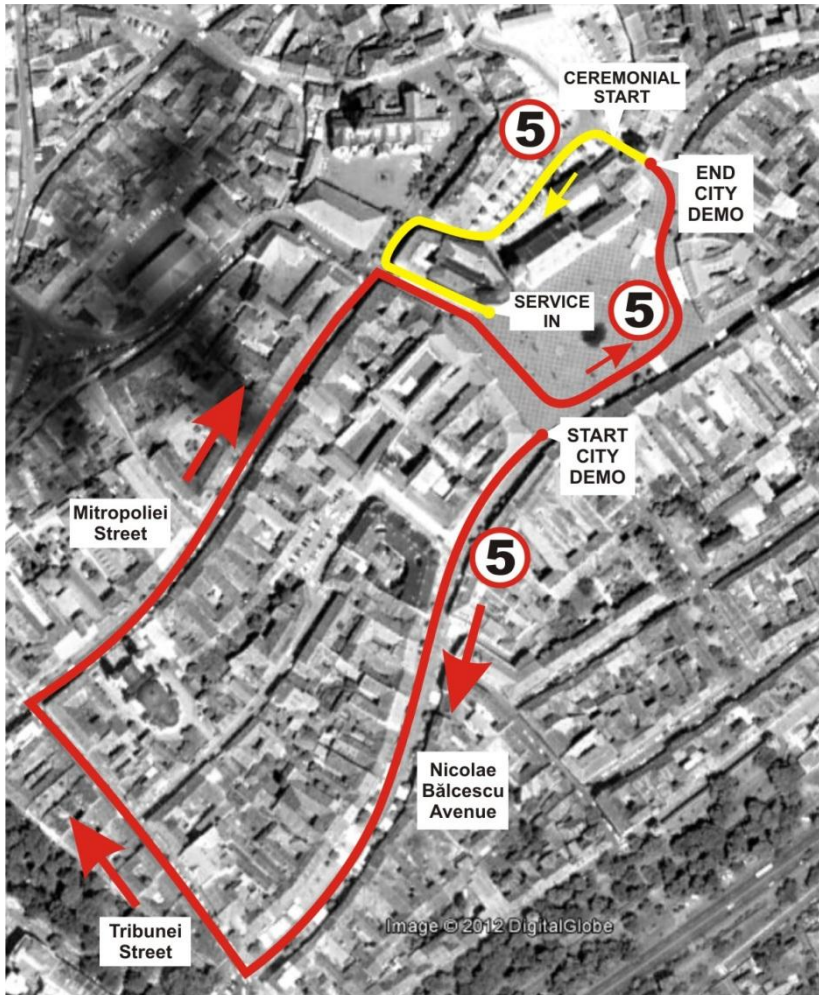
When necessary as part of service (i.e. changing a fuel tank or pump), emptying and/or refilling is permitted in a service park provided that:

- The work is carried out with the knowledge of the Organizer and under a supervision of a Park Officer.
- No other work is carried out on the car during the emptying and/or refilling operation.
- A suitable safety perimeter is established around the car.
- Only sufficient fuel is added to each the next refuel zone.
- 2 Marshals are in stand-by with flammable liquid Fire extinguishers.

FIA Regional Rally Championships Sporting Regulations (art. 42).

FRAS (ASN) Rally Specific Prescriptions (12.1.4)

APPENDIX 9
CITY DEMO & CEREMONIAL START



APPENDIX 10
SUPERSPECIAL STAGE

